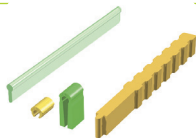


The articles in red are CAD/CAM reference numbers intended for a digital use of attachments. Primary parts (underlined> are not included in these reference numbers: follow the procedures of the CAD/CAM system for in-house manufacturing of the primary part.

COMPLETE ATTACHMENTS

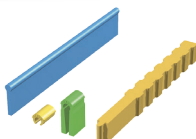
PRECI-HORIX STANDARD # 1701

2 x 1704 plastic bar pattern
6 x 1802 yellow rider
6 x 1703 processing rider**
1 x 1705 insertion tool



PRECI-HORIX PLASTICWAX # 1731

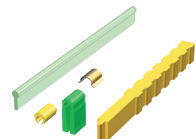
2 x 1734 PLASTICWAX bar pattern
6 x 1802 yellow rider
6 x 1703 processing rider**
1 x 1705 insertion tool



PRECI-HORIX COMBI

1741
1741 CC

1 x 1704 plastic bar pattern
2 x 1802 yellow rider
2 x 1703 processing rider**
2 x 1706 stainless steel housing
1 x 1705 insertion tool
** For lab use only.



PRECI-HORIX RIDER

# 1802	6 PCS	yellow	normal retention
# 1802B	30 PCS		
# 1805	6 PCS	white	reduced retention
# 1805B	30 PCS		
# 1806	6 PCS	red	increased retention
# 1806B	30 PCS		
# 1807	2 Y + 2 R + 2 W	combination package	
# 1807B	25 Y + 15 R + 10 W		



PRECI-HORIX METAL HOUSING

Ultrathin stainless steel housing with titanium/nitrate layer (gold-coloured) for a perfect fit of the riders in the prosthesis. Contains Ni. Length: 5 mm -

Width: 5 mm -

Thickness: 0.2 mm

# 1706	6 PCS
# 1706B	30 PCS



PRECI-HORIX ALIGNMENT METAL HOUSING*

Metal housing in TITANAX alloy. Do not heat.

Height: 3.33 mm - Width: 4.22 mm

# 1710	6 PCS
# 1710B	30 PCS

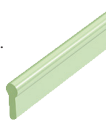


PRECI-HORIX PLASTIC PATTERN

Burn-out plastic pattern. For lab use only. Cast in any hard alloy.

Length: 50 mm - Height: 4 mm - ø 1.8 mm

# 1704	6 PCS
# 1704B	30 PCS

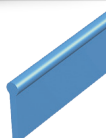


PRECI-HORIX PLASTICWAX PATTERN

Ideal for use with fast set investments. For lab use only. Cast in

any hard alloy. Length: 50 mm - Height: 8.25 mm - ø 1.8 mm

# 1734	6 PCS
# 1734B	30 PCS



AXIAL

ATTACHMENTS

CEKA AXIAL

PRECI-CLIX AXIAL

PRECI-CLIX RADICULAR

EXTRACORONAL

ATTACHMENTS

CEKA EXTRACORONAL

PRECI-VERTIX

PRECI-CLIX EXTRACORONAL

PRECI-SAGIX

PROFILE

ATTACHMENTS

PRECI-BAR

PRECI-HORIX

DIGITAL

SOLUTIONS

DIGITAL LIBRARIES

SPECIALTIES

PRECI-POST

CEKA SITE

CEKA Multi - CEKA Multi O

3-CP

PRECI-SEP

PLASTICWAX

PERMA-RET

MEASURING GAUGE

CEKA
PRECI-LINE

WWW.CKPL.EU

SIDE EFFECTS, WARNINGS AND PRECAUTIONS

- The attachments are intended for single use. A damage on the threading of the retention part or base rings can pose a risk if the product is to be reused.
- The products are non-sterile.
- There is a risk of poor fit when patient conditions change.
- Bacterial adhesion can be avoided by applying hygiene measures.
- Inappropriate use or bad manufacturing can lead to premature wear of the attachments.
- The functionality of the attachments will be adversely affected by traumas such as grinding and bruxism.
- For the purpose of traceability we advise you to record the lot number of the applied products in the patient file.
- Do not heat products containing titanium.
- Do not use products containing nickel in case of nickel allergy.
- The accessories RE H 79 and H 35 must be used outside the mouth.

CE 0197

Distributed by:
ALPHADENT NV
Mannebeekstraat 33
8790 Waregem, Belgium
T +32 (0)56 629 531
E info@ckpl.eu

CE 1250

* Manufactured by:
HL Technology S.A.
rue Jardinière 153
2300 La Chaux-de-Fonds, Switzerland
T +41 (0)32 925 90 50
www.hltechnology.ch

Prospectus no 273.EN-ed.H
© Copyright ALPHADENT NV 06/2023
BTW BE 0414.789.321 RPR Kortrijk

CEKA
PRECI-LINE

PROFILE ATTACHMENTS PRECI-HORIX®

ENGLISH



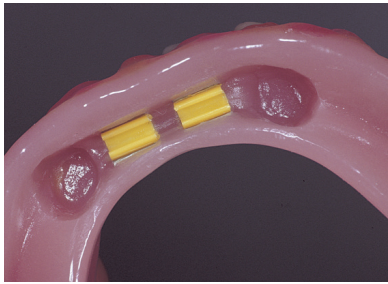
WWW.CKPL.EU

PRECI-HORIX

SIMPLE AND ECONOMICAL

The PRECI-HORIX bar and rider system, developed by Helmut Hader, is the most popular of all bar systems due to its economy and simplicity.

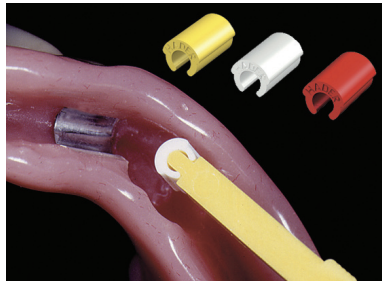
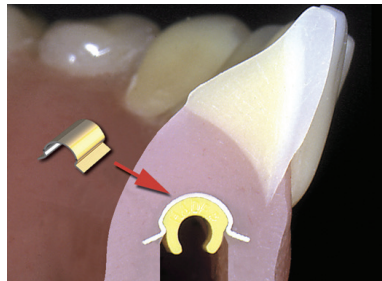
The excellent retention of the plastic clips, patient comfort, ease of processing and durability make PRECI-HORIX a first choice by experts for over 50 years.



- ✓ Easily replaceable female riders in three retention levels to choose from
- ✓ The bar pattern may be cast in an alloy of choice
- ✓ Extremely suitable for use on implants
- ✓ Direct support and rotational movement
- ✓ The soft snap of the female riders offers the patient security



SIMPLIFIES CLIP PLACEMENT



Recommended use is processing the metal housings into the denture simplifying clip placement and then using one of the three retention grips of plastic PRECI-HORIX clips in the metal housings.

White: reduced retention
Yellow: normal retention
Red: increased retention

EASY PROCESSING

