

Core *Performance*

Strength, confidence and security...from the core.

MultiCore[®]
Dual-Cure Core Build-Up Material


ivoclar[®]
vivadent[®]
passion vision innovation

When performance counts...

Count on MultiCore®.

Strength, confidence and security...from the core.

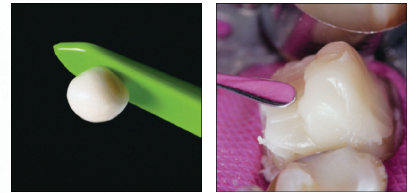
MultiCore dual-curing core build-up material provides the optimum foundation for the reconstruction of vital and non-vital teeth. Three shades, two viscosities, and excel-

lent physical properties enable MultiCore to provide the ultimate core performance for your core build up!

MultiCore® HB

Create individually sculpted composite cores with the high viscosity, sculptable MultiCore HB.

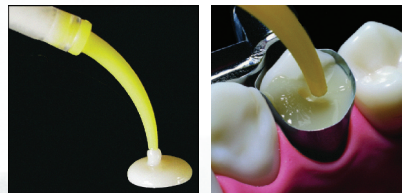
The non-slump consistency makes HB easy to mold and the non-sticky characteristic makes HB easy and fast to apply.



MultiCore® Flow

In clinical situations where a matrix can be utilized, the flowable consistency allows for fast, easy core build up.

MultiCore Flow is delivered in an auto-mix cartridge and provided with auto-mix and intra-oral mixing tips enabling precise application. Additionally, the low viscosity makes MultiCore Flow an excellent material for cementation of endodontic posts.

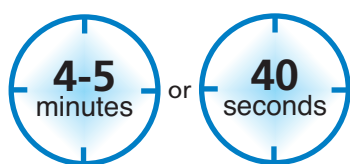


MultiCore HB provides the ability to model and sculpt while MultiCore Flow's low viscosity consistency allows bulk placement reducing chair time. The choice for curing is yours!



Dual-cure

MultiCore is light-cured in 40 seconds or optically self-cured in 4-5 minutes.



Physical Properties

MultiCore has been developed utilizing Ivoclar Vivadent's long-term clinical success with composite technology is reflected in products such as Tetric® and Heliomolar®.

	MultiCore® HB	MultiCore® Flow
Flexural Strength (MPa)	140	135
Flexural Modulus (MPa)	18,000	8,000
Compressive Strength (MPa)	250	250
Vickers Hardness (MPa)	800	450
Radiopacity (% AL)	300	300
Water Adsorption (µg/mm ³)	14.5	25
Solubility in Water (µg/mm ³)	3.0	2.5
Working Time at 37° C (seconds)	90-120	90-120

Three Shades

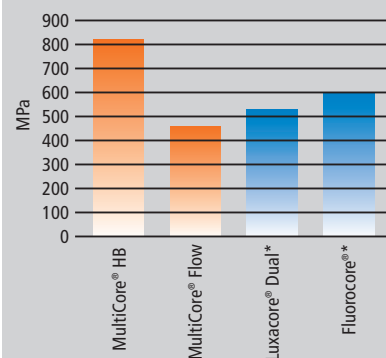
MultiCore is available in three shades, light (A1), medium (A3), and blue. Three shades enable the creation of a solid basis for all types of restorations – metal, and metal-free.



Vickers Hardness

measures the hardness of the cured material.

(Tested immediately after curing)

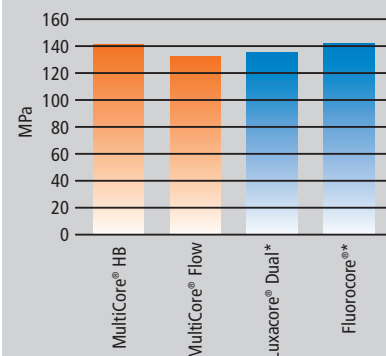


R & D Ivoclar Vivadent AG, Schaan 2004.

Flexural Strength

measures the force that a material can endure before it breaks.

(Tested after 24 hours)

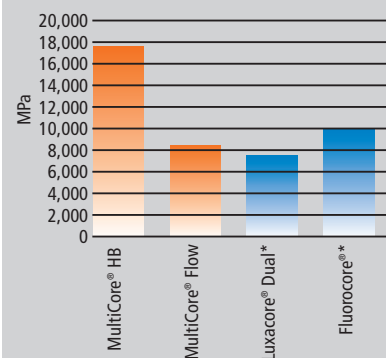


R & D Ivoclar Vivadent AG, Schaan 2004.

Flexural Modulus

measures the combination of strength and endurance of a material.

(Tested after 24 hours)



R & D Ivoclar Vivadent AG, Schaan 2004.

Delivery forms



MultiCore Flow Cartridge Refills

Contents:

- 1 - MultiCore Flow cartridge (50 g)
- 20 - Mixing Tips
- 20 - Intra Oral Tips
- 1 - MultiCore Flow Chart
- 1 - MultiCore Instructions for Use

578913 - Light

578914 - Medium

578915 - Blue

579096 - MultiCore Flow Mixing Tip Refill (50 tips)

579095 - MultiCore Flow Intra Oral Tip Refill (50 tips)

MultiCore Flow Syringe Refills

Contents:

- 1 - MultiCore Flow syringe (10 g)
- 20 - Mixing Tips
- 20 - Intra Oral Tips
- 1 - MultiCore Flow Chart
- 1 - MultiCore Instructions for Use

604166 - Light

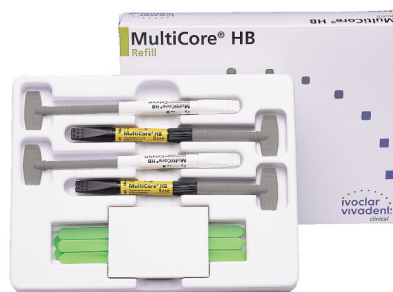
604167 - Medium

604168 - Blue

604209 - MultiCore Flow Syringe Mixing Tip Refill (10 tips)

604210 - MultiCore Flow Syringe
Intra Oral Mixing Tip Refill (10 tips)

579094 - MultiCore Dispenser Refills



MultiCore HB Refill

Contents:

- 2 - Syringes (4g) MultiCore HB Base
- 2 - Syringes (4g) MultiCore HB Catalyst
- 1 - Polyart-Mixing Pad (50x70mm)
- 5 - Spatulas, green

578919 - Light

578920 - Medium

578921 - Blue



ivoclarvivadent.com

©2011 Ivoclar Vivadent, Inc. MultiCore is a registered trademark of Ivoclar Vivadent.

*Luxacore Dual, Fluorocore are not registered trademarks of Ivoclar Vivadent.

[†] Data on file.

592236 Rev. 1 5/2011

United States

175 Pineview Drive
Amherst, NY 14228
716.691.0010
800.533.6825
Fax: 716.691.2285
mail@ivoclarvivadent.com

Canada

2785 Skymark Avenue, Unit 1
Mississauga, Ontario L4W 4Y3
905.238.5700
800.263.8182
Fax: 905.238.5711
mail@ivoclarvivadent.com

MultiCore®
Dual-Cure Core Build-Up Material

**ivoclar
vivadent®**
passion vision innovation