

Optra®

Innovative accessories



For **efficient
restorative
treatments**

Efficient
Esthetics

ivoclar
vivadent®
passion vision innovation

OptraGate®

Moisture control made easy

OptraGate® is a latex-free lip and cheek retractor. The aid's unique flexibility and elasticity make it comfortable to wear and assist patients to keep their mouth open.

Effective isolation
due to easier access

Focused and **efficient**
treatment procedures

Used in over

70

million

treatments to date*



* based on sales figures

Esthetics are impossible without moisture control

Adequate isolation is essential for the successful placement of direct restorations to avoid any contamination of the cavity with saliva, secretion and blood.

Often, relative isolation is already sufficient to achieve good results and patient acceptance is high for this form of isolation. Irrespective of whether you are placing a composite filling or cementing a ceramic restoration, OptraGate is an effective and efficient aid that forms a sound basis for the long-term clinical success of esthetic restorations.



Restoration of a deciduous tooth using relative isolation



Insertion of a partial crown on the LL6 using relative isolation

Pictures: courtesy of Dr med. dent. Knut Hufschmidt, Austria

1

2

3

4

5

6

Efficient Esthetics

Products that are optimally coordinated for direct restorative procedures enhance the efficiency with which high-quality esthetic restorations can be achieved.



Isolate

Effective isolation with **OptraGate®**, cotton rolls and saliva ejector



2 Bond

Direct intraoral application of **Adhese® Universal** with the efficient VivaPen®



4 Contour

Time-saving contouring with **OptraSculpt®** due to anti-stick effect



3 Restore

Direct
Tetric Evo-Line – One solution for all cavity classes

Indirect
Esthetic restorations made of **IPS e.max®**, optimally cemented with **Variolink® Esthetic**



5 Cure

Reliable and fast curing with the **Bluephase®** curing units



6 Polish

High-gloss polishing in only one step **OptraPol®**

Effective isolation thanks to easier access

The lip and cheek retractor enables easy access to an enlarged treatment field. It is therefore easier for clinicians to recognize salivation, directly remove it and thus minimize the risk of contamination.

OptraGate
for popular relative isolation

OptraDam Plus
for absolute isolation



Focused and efficient treatment procedures

Since OptraGate retracts the lips and cheeks evenly and gently, the need for using a dental mirror to assist in retracting soft tissue is eliminated. In addition, OptraGate also assists the patients in keeping their mouth wide

open for a prolonged time, benefiting efficient treatment procedures. The different colours available are designed to please children and increase their compliance.

Versatile range of indications

OptraGate provides a convincing solution in many different clinical situations, far more than just moisture control. Tiresome retraction of soft tissue is a thing of the past with OptraGate.



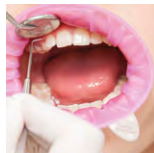
Intraoral scans



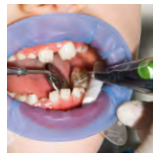
Prosthetics



Restorative treatments



Professional care for children



Restorative treatment in children



Pediatric dentistry

Pictures: courtesy of Ivoclar Vivadent AG, Liechtenstein

“ As a clinician, I benefit from easy access to an enlarged treatment field and a streamlined procedure to achieve relative isolation. In addition, I am now able to perform many treatments without the help of a dental assistant. OptraGate allows me to focus completely on my patient and the clinical situation at hand. ”



Dr med. dent. Knut Hufschmidt
Austria

OptraGate is placed within a few seconds.
Placement is a piece of cake. See for yourself!



Click here for the video:


www.ivoclarvivadent.com/OptragateFlowchart



OptraSculpt®

Time-saving contouring due to anti-stick properties

OptraSculpt® and OptraSculpt Pad are contouring instruments suitable for the non-stick shaping and contouring of surfaces. They are especially designed to shape unpolymerized sculptable composites in direct restorative treatments and to contour and smoothen paste-like laboratory composites.



Outstanding esthetics:
No instrument marks on
the restoration surface

Easy contouring
due to non-stick effect

Reduced effort
in finishing and polishing

Outstanding esthetics

The contouring and shaping of state-of-the-art high-quality dental composites is a challenging task. Thanks to their non-stick coating, the OptraSculpt attachments provide remedy since no instrument marks are left on the material. Special attachment shapes are available to minimize the risk of air entrapments in the composite during application. Ultimately, a homogeneous surface design is a prerequisite to achieve esthetic results.



Contouring with OptraSculpt Pad



Final outcome

Reference scales on the instrument handle support clinicians in achieving true-to-nature esthetic and anatomically shaped restorations. The reference scales on the instrument handle provide easy comparison with average tooth widths and axis alignments in e.g. upper anterior teeth.



Reference scale 1



Reference scale 2

Pictures: courtesy of Ivoclar Vivadent AG, Liechtenstein

Effective contouring for long-term success

Apart from other factors, contouring significantly influences the long-term success of the treatment, since the correct anatomical shape of the restoration is crucial to the overall health of the chewing system. The attachment shapes and working angle of the OptraSculpt Pad and OptraSculpt instruments have been especially adapted to suit anterior and posterior surfaces. Correctly designed proximal marginal ridges facilitate the cleaning of interdental spaces. Moreover, smooth restoration surfaces minimize the accumulation of plaque, and carefully created margins reduce the occurrence of secondary caries.



OptraSculpt
for the posterior region



Ball
Adaptation of
composites



Pointed tip
Professional contouring
of fissures

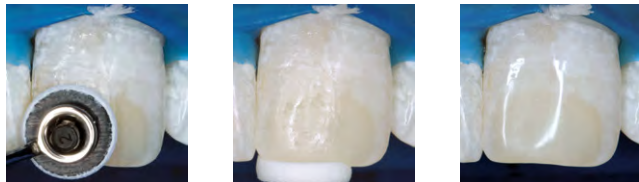


Chisel
Contouring of proximal
marginal ridges



Easy adaptation due to non-stick effect

The innovative two-component attachments allow you to achieve natural-looking restorations with little effort. The attachments' non-stick effect prevents the instruments from sticking on the composite material. Adaptation of composite material is very easy since no instrument marks are left on the material.



Pictures: courtesy of Dr Ronny Watzke, Ivoclar Vivadent, Liechtenstein

OptraSculpt Pad

Homogeneous
adaptation in the
anterior region

Reduced effort in finishing and polishing

A mark-free, homogeneous contouring result allows you to streamline the finishing and polishing procedure and reduces the amount of time required to complete the restoration.

OptraPol®

Efficient polishing of composite restorations

OptraPol polishers are filled with micro-fine diamond crystals. They are especially suitable for polishing all common types of composite restorations.



Brilliant surfaces in only one step

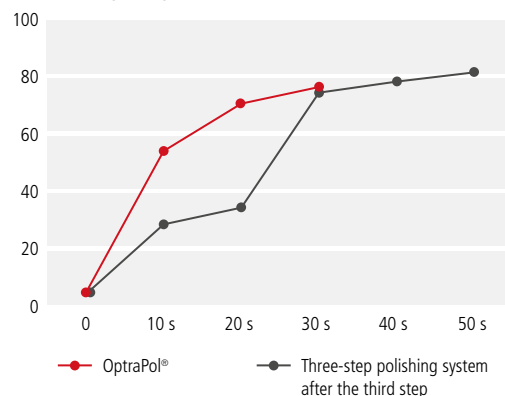
OptraPol lends a beautiful natural lustre to highly esthetic composite restorations. The high diamond content of more than 70 wt % ensures excellent results.



Pictures: courtesy of Dr M. Dieter, Dr A. Peschke and Dr L. Enggist, Ivoclar Vivadent, Liechtenstein

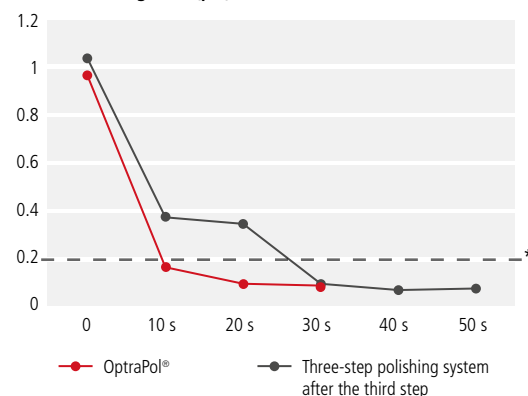
Restorations are smoothed to a high gloss within a few seconds in a single step.

Surface gloss (gloss units)



Compared with conventional three-step polishing systems, the one-step OptraPol polisher achieves better results in less time and only a single step. The surfaces have a smooth and even finish, which prevents plaque accumulation.

Surface roughness (µm)



Sources: *In-vitro* test of competitive polishing systems; composite: Tetric EvoCeram® (Dr S. Heintze, Ivoclar Vivadent, Schaan, 2009)

Literature: Bollen, C. M., Lambrechts, P. & Quirynen, M. (1997). Comparison of surface roughness of oral hard materials to the threshold surface roughness for bacterial plaque retention: a review of the literature. *Dent Mater*, 13(4), 258-269.

Delivery forms

OptraGate

| | |
|---|----------|
| Assortment 40 x size R (regular) 40 x size S (small) | 577275WW |
| Refill R 80 x size R (regular) | 590850WW |
| Refill S 80 x size S (small) | 590851WW |
| Refill Junior 80 x size Junior | 591451WW |
| Refill R 40 x size R (regular) | 683377WW |
| Refill S 40 x size S (small) | 683378WW |
| Refill Junior 40 x size Junior | 683376WW |

OptraGate in blue and pink

| | |
|---|----------|
| Starter Kit/ blue and pink 4 x size Junior blue 4 x size Junior pink 4 x size S (small) blue 4 x size S (small) pink | 669087WW |
| Small Assortment/ blue and pink 20 x size S (small) blue 20 x size S (small) pink | 669088WW |
| Junior Assortment/ blue and pink 20 x size Junior blue 20 x size Junior pink | 669089WW |

OptraDam Plus

| | |
|---|----------|
| Assortment 25 x size R (regular) 25 x size S (small) | 627401AN |
| Refill R 50 x size R (regular) | 627399AN |
| Refill S 50 x size S (small) | 627400AN |



| OptraSculpt Pad | |
|--|----------|
| Assortment | 639791AN |
| 1x Instrument single-ended 1x Refill pads 4mm/ 60 1x Refill pads 6mm/ 60 | |
| OptraSculpt Pad Refill 4mm/ 60 | 639792AN |
| Pads 4 mm | |
| OptraSculpt Pad Refill 6mm/ 60 | 639793AN |
| Pads 6 mm | |
| OptraSculpt Pad instrument Refill | 646004AN |
| Instrument single-ended | |

| OptraSculpt | |
|---|----------|
| OptraSculpt & OptraSculpt Pad System Kit | 683066AN |
| 1x Instrument single-ended 1x Instrument double-ended 1x Refill pads 4mm/ 60 1x Refill modelling tips (ball) / 20 1x Refill modelling tips (chisel) / 20 1x Refill modelling tips (pointed tip) / 20 | |
| OptraSculpt Starter Kit | 683067AN |
| 1x Instrument double-ended 1x Refill modelling tips (ball) / 20 1x Refill modelling tips (chisel) / 20 1x Refill modelling tips (pointed tip) / 20 | |
| OptraSculpt Next Generation Refill ball/ 60 | 683068AN |
| Modelling tip: ball | |
| OptraSculpt Next Generation Refill chisel/ 60 | 683069AN |
| Modelling tip: chisel | |
| OptraSculpt Next Generation Refill pointed tip/ 60 | 683100AN |
| Modelling tip: pointed tip | |
| OptraSculpt Refill instrument | 683154AN |
| Instrument double handed | |

| OptraPol | |
|---|--------|
| Assortment | 634464 |
| 6 x polishers small flame 6 x polishers large flame 4 x polishers cup 4 x polishers lens | |
| Refill polishers small flame | 634458 |
| Refill polishers large flame | 634461 |
| Refill polishers cup | 634459 |
| Refill polishers lens | 634460 |

| OptraFine | |
|--|----------|
| Assortment | 601989AN |
| 2 x flame F (finisher) 2 x flame P (polisher) 2 x cup F 2 x cup P 2 x disc F 2 x disc P 1 x polishing paste 6 x nylon brushes | |
| Refill polishers small flame | 634458 |
| Refill polishers large flame | 634461 |
| Refill polishers cup | 634459 |
| Refill polishers lens | 634460 |

| OptraStick | |
|-------------------------|----------|
| Refill 48 pieces | 699972AN |

