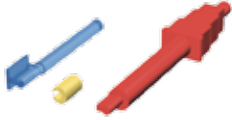


1801

PRECI-VERTIX STANDARD

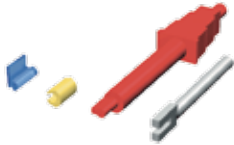
6 x 1803 male with attached paralleling mandrel*
6 x 1802 yellow female
1 x 1804 insertion tool



1811

PRECI-VERTIX P

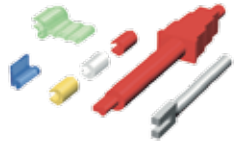
6 x 1813 angled male for the best abutment and tissue contours + paralleling mandrel*
6 x 1802 yellow female
1 x 1804 insertion tool



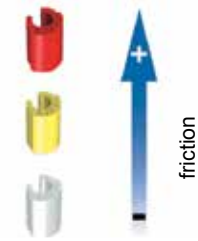
1812

PRECI-VERTIX P COMBI

2 x 1813 angled male for the best abutment and tissue contours + paralleling mandrel*
2 x 1802 + 2 x 1805 + 2 x 1806 females
2 x 1808 plastic castable housing*
1 x 1804 insertion tool



REPLACEMENT PARTS



Normal friction:

1802 6 yellow females
1802B 50 yellow females

Reduced friction:

1805 6 white females
1805B 50 white females

Increased friction:

1806 6 red females
1806B 50 red females

Combination package:

1807 2 y + 2 r + 2 w
1807B 25 y + 15 r + 10 w

PRECI-VERTIX PLASTIC HOUSING



1808 6 castable housings*
1808B 50 castable housings*

* For lab use only.

CEKA AXIAL
PRECI-CLIX AXIAL
PRECI-CLIX RADICULAR
PRECI-BALL

CEKA EXTRACORONAL
PRECI-VERTIX
PRECI-CLIX EC
PRECI-SAGIX
PRECI-52

PRECI-BAR
PRECI-HORIX
PRECI-CLIP

PRECI-PROFILE
PRECI-POST
CEKA SOL
CEKA SITE
CEKA BOND
3C-BOND
PERMA-RET
PRECI-SEP
PLASTICWAX
EXPANDO
CEKA Multi (O)
MEASURING GAUGE
CKPL DIGITAL LIBRARY

01.
AXIAL
ATTACHMENTS

02.
EXTRACORONAL
ATTACHMENTS

03.
PROFILE
ATTACHMENTS

SPECIALTIES

02.
EXTRACORONAL
ATTACHMENTS

PRECI-VERTIX®
ENGLISH

WWW.CKPL.EU

SIDE EFFECTS, WARNINGS AND PRECAUTIONS

The attachments are intended for single use.
The products are non-sterile.
There is a risk of poor fit when patient conditions change.
Bacterial adhesion can be avoided by applying hygiene measures.
Inappropriate use or bad manufacturing can lead to premature wear of the attachments.
The functionality of the attachments will be adversely affected by traumas such as grinding and bruxism.
For the purpose of traceability we advise you to record the lot number of the applied products in the patient file.
Do not heat products containing titanium.
Do not use products containing nickel in case of nickel allergy.
The accessories RE H 79 and H 35 must be used outside the mouth.



CEKA
ATTACHMENTS
PRECI-LINE



CE0197



Prospectus no 262.EN-ed.C
© Copyright ALPHADENT NV 03/2017 - BTW BE 0414.789.321 RPR Kortrijk
ALPHADENT NV • Mannebeekstraat 33, 8790 Waregem, Belgium
T +32 56 629 531 - E info@ckpl.eu

CEKA
ATTACHMENTS
PRECI-LINE

PRECI-VERTIX

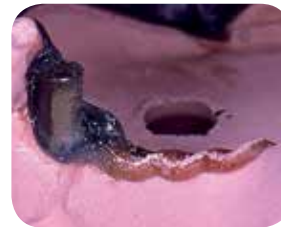
- ✓ Easy procedures and servicing
- ✓ Aesthetic: may be used with anterior abutments
- ✓ Minimal servicing
- ✓ Use with any dental alloy
- ✓ Inexpensive
- ✓ Excellent patient comfort
- ✓ Over 40 years of clinical use



PRECI-VERTIX offers long-lasting retention, unsurpassed lateral stability and minimal replacement. The elastic clips are easily replaceable and available in 3 friction levels.



Parallel the male patterns into the abutments. The male can be reduced to 3 mm vertical height if necessary. A shoulder for a lingual bracing arm is recommended. Cast and finish. Place the yellow female over the male and block out all undercuts for duplication.



Make a refractory model and wax up the frame. Cover the reproduced attachment with wax. Invest and cast. Finish the prosthesis. Do not polish the inside of the metal sleeve. Leave it sandblasted. Reduce the occlusal side of the male by 0.2 mm to relieve the attachment from occlusal loads. Press the clip with the insertion tool into the sleeve. To remove, use a pointed instrument. Engage and pull out the female.

OPTION FOR USING THE PRECI-VERTIX HOUSING RECOMMENDED

A burn-out plastic housing ensures a proper fit for the clip and provides excellent aesthetics.



Assemble the housing with the white female (# 1805). Adapt the housing to proper vertical height and gingival contour. A lingual arm is added directly to the housing. Shape the housing for porcelain or acrylic veneering and great aesthetics. Sprue and remove the white female from the housing with a pointed instrument. Invest and cast. Apply veneering. Connect the extension of the housing to the cast framework with acrylic or composite.