

Variolink[®] Esthetic

The esthetic luting composite



**AMAZINGLY
SIMPLE ESTHETICS!**

Recommended for
IPS e.max[®]
CAD/Press

Recommended for
Tetric[®] CAD



ivoclar
vivadent[®]
passion vision innovation

Variolink® Esthetic



Variolink Esthetic is an esthetic light- and dual-curing luting composite for the permanent cementation of demanding ceramic and composite resin restorations.



Exceptional esthetics



The Effect shade concept

In order to precisely match the shade effect of the restoration with the adjacent natural dentition, Ivoclar Vivadent has developed the new, balanced and concise Effect shade system. The "Neutral" shade demonstrates the highest translucency level and therefore enables a colour neutral cementation of the restoration. The shades "Light" and "Light+" produce a gradual brightening effect, whereas the shades "Warm" and "Warm+" result in the gradual darkening of the overlying ceramic and composite restoration.

Excellent shade stability



Variolink Esthetic demonstrates exceptional shade stability. This is made possible by the patented, reactive light initiator Ivocerin®, which is 100 per cent free of amine-based co-initiators.

Variolink Esthetic forms the basis for long-lasting and reliable esthetic results. Even if exposed to intensive light or a humid environment, Variolink Esthetic is not subject to visible shade changes.



Variolink Esthetic Suntest (acc. to ISO 4049), left side exposed to light



Variolink Esthetic reference

After immersion in water

The exceptional esthetics of Variolink Esthetic is furthermore enhanced by its lifelike fluorescence similar to that of natural teeth. Additionally, the luting composite is very resistant to wear, thus ensuring a good marginal quality of the restoration while in place.



User-friendly processing

Easy excess removal

In the past, adhesive luting composites were considered rather complex to use due to the difficult removal of excess material. Now, Variolink Esthetic sets a new benchmark in this respect.

The smart combination of the reactive light initiator Ivocerin and a light sensitivity filter allows the dental professional to easily remove excess material after pre-polymerization with light.



For more details watch the video: www.ivoclarvivadent.com/vleien



Flexible, situational consistency

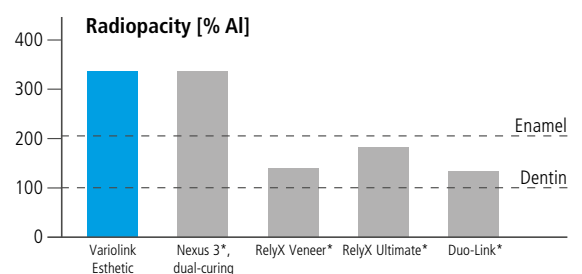
The viscosity controller optimally combines the material's good flow behaviour with its stability. The cement is easy to extrude from the syringe. Excess material smoothly flows from the cement gap, but remains stable at the cementation joint so that it can be readily removed.



For more details watch the video: www.ivoclarvivadent.com/vlewen

Impressive radiodiagnostics

Variolink Esthetic continues the tradition of its predecessor material Variolink II in terms of radiopacity. The material's high radiopacity makes it easier to detect excess cement and secondary caries.



* Not registered trademarks of Ivoclar Vivadent AG.
Source: R&D Ivoclar Vivadent AG, Schaan, 2014 (measured according to ISO 4049).

One system for clinical success

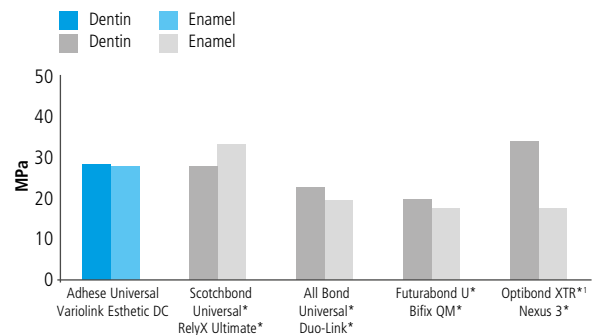


Optimal bonding

Adhese® Universal is a single-component, light-cured adhesive for direct and indirect bonding procedures. With its unique VivaPen® delivery form, it ideally complements Variolink Esthetic in the cementation of esthetically demanding restorations. Adhese Universal is compatible with all etching techniques and allows the clinician to flexibly respond to the clinical indication at hand. The technique- and fault-tolerant Adhese Universal ensures consistently high bond strengths and minimizes the risk of postoperative sensitivities.

Naturally, Variolink Esthetic can also be used in combination with the established adhesives Syntac® and ExcITE® F.

Shear bond strength after dual-curing – selective enamel etching on enamel and dentin after 10,000 thermocycles

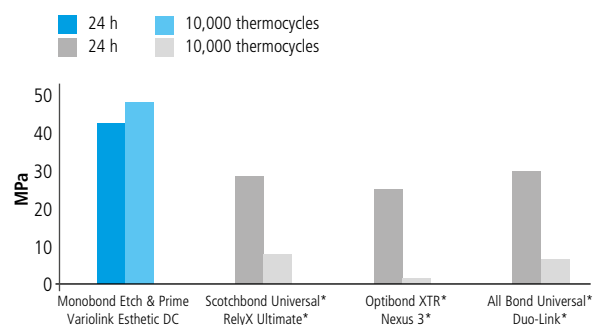


† Self-etch technique, because Optibond XTR is not indicated for selective enamel etching.
* Not registered trademarks of Ivoclar Vivadent AG.
Source: R&D Ivoclar Vivadent AG, Schaan, 2013 – 2015

Ideal solution for glass-ceramic restorations

Variolink Esthetic produces excellent bond strength values on restorations made of glass-ceramics, e.g. IPS e.max® CAD/Press or IPS Empress® CAD/Esthetic, when used in combination with Monobond Etch & Prime®, the world's first self-etching glass-ceramic primer. The single-component ceramic primer etches and silanates glass-ceramic surfaces in one easy step. Etching the contact surfaces with the unpopular hydrofluoric acid is no longer required.

Tensile strength on the lithium-disilicate glass-ceramic IPS e.max® CAD at baseline and after ageing



* Not registered trademarks of Ivoclar Vivadent AG.
Source: R&D Ivoclar Vivadent AG, Schaan, 2014

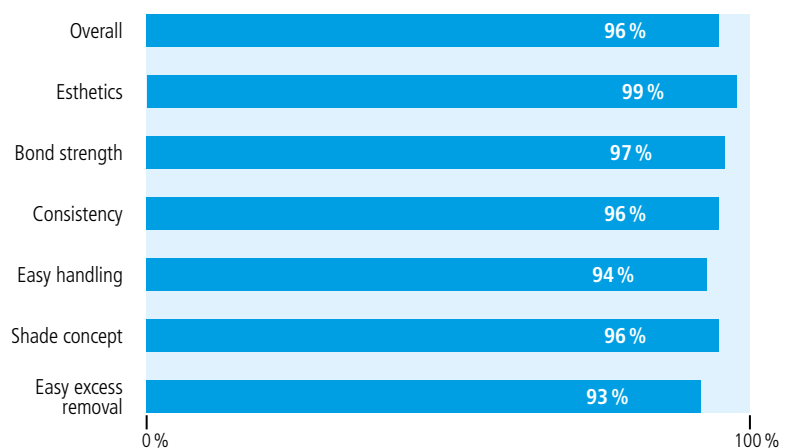




Enthusiastic users

In a customer survey, 96% of the participants were satisfied or very satisfied with Variolink® Esthetic. The users were particularly impressed with the esthetic properties and bond strength of the luting composite. The material's consistency and ease of use also gained considerable recognition. Ninety-eight per cent of the people testing Variolink Esthetic ended up integrating it into their day-to-day practice.

How customers rated the most important product features:



Source: Ivoclar Vivadent AG, customer survey (approx. 700 participants) in Europe/USA, September 2016



Impressed experts



“ I use Variolink Esthetic in my practice and it has changed my life! The clean-up is easy using the initial cure - I am able to fit restorations and clean up in a fraction of the time. I like the range of shades, the handling and the flexibility of light cured or dual cured cements and find the application very straightforward. ”

Dr Elaine Halley
United Kingdom



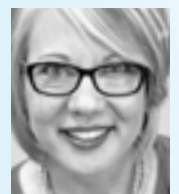
“ Variolink Esthetic is for me the first choice for the cementation of glass ceramics! I can use the material for both light-curing and dual-curing modalities. The effect shades are logically designed. The composite offers easy processing properties with regard to both cementation and excess removal. These are decisive advantages for me. ”

Dr Jan Frydensberg-Thomsen
Denmark



“ Variolink Esthetic is my go-to for all anterior restorative cases. The ease of handling, beautiful esthetics and predictability are the perfect complement to beautiful ceramics. ”

Dr Lee Ann Brady
USA



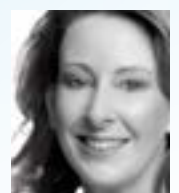
“ Shade selection and stability, easy excess removal, good radiopacity, and excellent handling are characteristics I look for in a high quality ceramic resin cement. The versatility of having both a dual cure and light cure option makes Variolink Esthetic a winner for me! ”

Dr Edward Lowe
Canada



“ Variolink Esthetic provides a simple colour matching system and the choice of dual cure or light cure for veneers. The delivery system is efficient and the initial cure is a flexible, easy to remove layer that comes away cleanly for trouble free clean-up. ”

Dr Andrea Shepperson
New Zealand





Delivery forms

Variolink Esthetic LC System Kit (only light-curing)

3 syringes Variolink Esthetic LC, 2 g (light, neutral, warm)
3 syringes Variolink Esthetic try-in paste, 1.7 g (light, neutral, warm)
1 syringe Total Etch, 2 g
1 Adhese Universal VivaPen, 2 ml, or 1 bottle, 5 g
1 bottle Monobond Plus, 5 g
1 syringe Liquid Strip, 2.5 g
Various accessories

666433WW with Adhese Universal VivaPen, 2 ml
666065WW with Adhese Universal bottle, 5 g

Variolink Esthetic DC System Kit (dual-curing)

3 automix syringes Variolink Esthetic DC, 5 g (light, neutral, warm)
3 syringes Variolink Esthetic try-in paste, 1.7 g (light, neutral, warm)
1 syringe Total Etch, 2 g
1 Adhese Universal VivaPen, 2 ml, or 1 bottle, 5 g
1 bottle Monobond Plus, 5 g
1 syringe Liquid Strip, 2.5 g
Various accessories

666434WW with Adhese Universal VivaPen, 2 ml
666125WW with Adhese Universal bottle, 5 g

Variolink Esthetic LC System Kit IPS e.max (only light-curing)

3 syringes Variolink Esthetic LC, 2 g (light, neutral, warm)
3 syringes Variolink Esthetic try-in paste, 1.7 g (light, neutral, warm)
1 syringe Total Etch, 2 g
1 Adhese Universal VivaPen, 2 ml
1 bottle Monobond Etch & Prime, 5 g
1 syringe Liquid Strip, 2.5 g
Various accessories

681493WW

Variolink Esthetic DC System Kit IPS e.max (dual-curing)

3 automix syringes Variolink Esthetic DC, 5 g (light, neutral, warm)
3 syringes Variolink Esthetic try-in paste, 1.7 g (light, neutral, warm)
1 syringe Total Etch, 2 g
1 Adhese Universal VivaPen, 2 ml
1 bottle Monobond Etch & Prime, 5 g
1 syringe Liquid Strip, 2.5 g
Various accessories

681492WW

Variolink Esthetic DC System Kit (dual-curing)

1 automix syringe Variolink Esthetic DC, 2.5 g (neutral)
1 syringe Variolink Esthetic try-in paste, 1.7 g (neutral)
1 Adhese Universal VivaPen, 0.5 ml
1 bottle Monobond Etch & Prime, 1 g
1 syringe Liquid Strip, 2.5 g
Various accessories

6817593WW

Variolink Esthetic DC Starter Kit IPS e.max (dual-curing)

1 automix syringe Variolink Esthetic DC, 2.5 g (neutral)
1 syringes Variolink Esthetic try-in paste, 1.7 g (neutral)
1 Adhese Universal VivaPen, 0.5 ml
1 bottle Monobond Etch & Prime, 1 g
1 syringe Liquid Strip, 2.5 g
Various accessories

687592WW

Variolink Esthetic LC Refill (only light-curing)

1 syringe, 2 g (in the selected shade)
5 application tips
666126WW Light+
666127WW Light
666128WW Neutral
666129WW Warm
666130WW Warm+

Variolink Esthetic DC Refill (dual-curing)

1 automix syringe, 5 g (in the selected shade)
10 mixing tips
666117WW Light+
666118WW Light
666119WW Neutral
666120WW Warm
666121WW Warm+

Variolink Esthetic DC Refill (dual-curing)

1 automix syringe, 9 g (in the selected shade)
15 mixing tips
666122WW Light
666123WW Neutral
666124WW Warm

Variolink Esthetic DC, Refill incl. 3 syringes (dual-curing)

3 automix syringes, 9 g (in the selected shade)
45 mixing tips
692424WW Light
692425WW Neutral
692426WW Warm

Variolink Esthetic Try-In Paste Refill

1 syringe, 1.7 g (in the selected shade)
5 application tips
666067WW Light+
666113WW Light
666114WW Neutral
666115WW Warm
666116WW Warm+

Accessories

645951 mixing tips, short, pointed, refill, 15 units
559224 Variolink application tips, refill, 20 units

Manifold indications

Product	Variolink® Esthetic	
Curing mode	LC light-curing ¹	DC dual-curing
Recommended adhesive	adhesive: Adhese® Universal	
Glass-ceramics e.g. IPS Empress®		
Veneers	✓	✓
Inlays/Onlays/Partial Crowns	✓	✓
Crowns		✓
Lithium disilicate e.g. IPS e.max® CAD/Press		
Veneers (occlusal veneers)	✓	✓
Inlays/Onlays/Partial Crowns	✓	✓
Crowns/Bridges		✓
Oxide ceramics (zirconium oxide) e.g. IPS e.max® ZirCAD		
Crowns/Bridges		✓
Root canal posts		
Hybrid ceramics and composites e.g. Tetric® CAD		
Veneers	✓	✓
Inlays/Onlays	✓	✓
Crowns		✓
Root canal posts (e.g. FRC Postec® Plus)		
Metal / Metal-Supported		
Inlays/Onlays/Partial Crowns		✓
Crowns/Bridges		✓
Maryland bridges		✓
Root canal posts		

¹ Restorations with a layer thickness of < 2 mm and sufficient translucency

Cementation Navigation System

Finding your way out of the cements maze

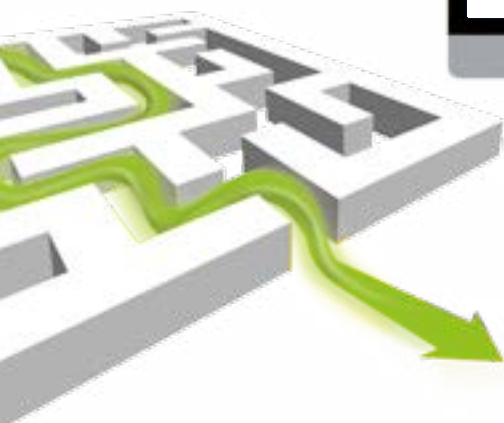
The Cementation Navigation System, the popular multimedia application, assists you in selecting a suitable luting material for virtually every situation when cementing restorations on natural tooth structure or implant abutments. Moreover, CNS gives you an overview of all the different cements available from Ivoclar Vivadent.

Clear and detailed animations give you a comprehensive tour of the procedure, starting with removal of the temporary restoration and ending with topical fluoride application.

www.cementation-navigation.com



- detailed 3D animations
- step-by-step instructions
- easy operation





Fixed Prosthetics

Variolink® Esthetic forms a part of the “Fixed Prosthetics” product category. The products of this category cover the procedure involved in the fabrication of fixed prosthetic restorations – from temporization to restoration care. The products are optimally coordinated with each other and enable successful processing and application.



THESE ARE FURTHER PRODUCTS OF THIS CATEGORY:

IPS e.max® System

all ceramic – all you need



The comprehensive solution covering all indications

- Highly esthetic, high-strength materials for the press and CAD/CAM technique
- Unique lithium disilicate (LS₂) and zirconium oxide (ZrO₂) ceramics for restorations ranging from thin veneers to long-span bridges
- Flexibility of cementation: adhesive, self-adhesive and conventional

Fluor Protector S

The protective fluoride varnish



Homogeneous protective varnish in a dispensing tube

- Immediate fluoridation of enamel
- High-yielding fluoride depot
- Mild taste

Would you like to know more about the products of the “Fixed Prosthetics” category? Simply get in touch with your contact person at Ivoclar Vivadent or visit www.ivoclarvivadent.com for more information.