

 CS.Neo2

**EASY**  
EXCELLENCE

3D-SCANNERS  
MILLING  
PROSTHETIC PARTS  
ORTHODONTICS

G2

# Groundbreaking innovation

—  
incredibly easy to use



[www.cadstar.dental](http://www.cadstar.dental)

 **CAD**star

# Digitalization has never been so easy!

---

It arrived. The second generation  
of our most successful product.

**Better,  
stronger and  
faster**

than ever before!

# < 30 sec.

## for digitalization of a 3 element bridge?

Sure - no problem and we'll add one on top. For the whole workflow you only need 1-Click.

Competitors	300 Sek.
CS.Neo2 <sup>Max</sup>	< 30 Sek.



Ø Human hair	100 µm
CS.Neo2 accuracy	up to 2 µm

# 48 Mpx

## per shot and everything in crystal clear quality!

Tested and certified, because we won't leave the result to chance!

100% compatibility with exocad

## open system

Export data: 3Shape, Gamma, OnyxCeph, STL, PLY

technical support

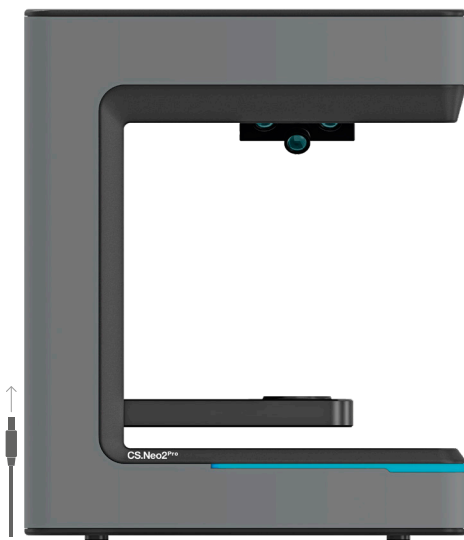
## free of charge

free from annoying license fees/service contracts

Manufacturing

## made in Austria

> 90% of components from Europe



### We think further

Due to the wall-flush design, our scanner can easily and seamlessly be integrated into any laboratory. No broken cables, no unnecessary waste of space.





CS.Neo2 Max

# Work smarter, not harder.

Don't scan your work no longer step by step. Use the new dual-scan technology and complete the following tasks in just one step.

Upper- and lower jaw  
Gingiva (UJ+ LJ)  
Implants (UJ+ LJ)

Neighbour teeth (UJ+ LJ)  
up to 28 stumps

## Precision is just an auxiliary expression.

Per scan position our scanner captures and processes more than 140 million image points.

140.000.000 image points/position

## Calculation above the speed of light.

In less than a second our scanner is doing more than 1 billion calculations.

1.000.000.000 calculations/sec.

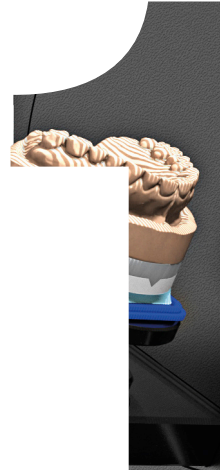
# So much WOW

and yet our scanner keeps its promises!

## 1-Click wonder

Fully automated workflow. Insert the models inside the scanner and the rest takes care of itself.

Models need to be placed manually.



## 5 sec. Full-Arch

Now a full arch scan takes only 5 seconds, because fast wasn't even fast enough for us.

Scan time is depending on scanmode.

### Let's talk tech

- \* HxWxD: 396x405x337 mm
- \* Weight: ~12 kg
- \* Scan system: 2-3 axis
- \* Language: Multilingual
- \* Scantype: BW/Color
- \* Technology: structured white light
- \* Connection type: USB 3.0
- \* Guarantee: 2 years

### available accessories

- \* Arti Base
- \* Calibration body
- \* Multi-Die adapter
- \* Modelholder (with screw or Blu-Tac)
- \* Model fixator
- \* Quarter Tray adapter
- \* Automated impression axis
- \* Split Cast adapters

# Our best scanner, so that your magnificent work will get even greater.



## DEEP VIEW

### **4 eyes that really see EVERYTHING.**

Deep View is a quad-cam scanning technique to have a deeper look into interdental areas.

- \* rescanning not necessary any more
- \* True Color (RGB color cameras)
- \* CS.Neo2 Pro / CS.Neo2 Max



## BEAST MODE

### **Now is the time to unleash the beast.**

The automatic GPU detection in our scanning application will get the very best out of your scanner.

- \* 60% increase in performance
- \* super realistic scan results
- \* all CS.Neo2 models



## AUTO OCCLUSION

### **1 step with 1.000 benefits.**

Take advantage of perfect occlusion with less effort for your scanned objects.

- \* Articulator scan not necessary any more
- \* ability to save several types of articulators
- \* CS.Neo2 Pro / CS.Neo2 Max



## ID DETECTION

### **Less is more, today more than ever.**

Thanks to the automatic accessories recognition handling the scanner is more comfortable than ever before.

- \* 50% less interaction with the scanner
- \* Less-Click Workflow (autostart)
- \* CS.Neo2 Pro / CS.Neo2 Max

# Yes, we scan!

our new models in comparison



**CS.Neo2**



**CS.Neo2<sup>Pro</sup>**



**CS.Neo2<sup>Max</sup>**



**No**

Auto Occlusion



**Yes**

Auto Occlusion



**Yes**

Auto Occlusion



**No**

ID Detection



**Yes**

ID Detection



**Yes**

ID Detection



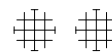
**No**

Deep View



**Yes**

Deep View



**Yes**

Deep View



**1**

Model capacity



**1**

Model capacity



**2**

Model capacity



**12 Sek.**

Scantime per model\*



**10 Sek.**

Scantime per model\*



**5 Sek.**

Scantime per model\*



**2**

Cameras (black/white)



**4**

Cameras (Color RGB)



**8**

Cameras (Color RGB)



**12 Mpx**

Resolution cameras



**24 Mpx**

Resolution cameras



**48 Mpx**

Resolution cameras

# Compare us

You'll see it's worth it

	2 <sup>nd</sup> generation <b>CS.Neo</b>	Scanner 1	Scanner 2	Scanner 3	Scanner 4
open system / STL, PLY (exocad compatible)	✓				
made in Austria	✓				
5 sec. for full arch scan	✓				
< 30 sec. for 3 element bridge	✓				
5 µm accuracy (2 µm repeatability)	✓				
up to 8 color-cameras (48 Mpx)	✓				
scan up to 2 models simultaneously	✓				
scan up to 28 stumps simultaneously	✓				
capacity for whole articulator	✓				
Deep View	✓				
Beast Mode	✓				
Auto Occlusion	✓				
ID Detection	✓				
no royalties	✓				
no maintenance fees	✓				
2 year guarantee (expandable up to 4 years)	✓				
free support (during guarantee period)	✓				
free training (CADstar Academy)	✓				
express repair or replacement within 48h	✓				