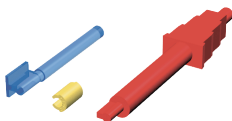


The red article is a CAD/CAM reference number intended for a digital use of attachments. Primary parts (underlined> and auxiliaries (marked in green) are not included in this reference number: follow the procedures of the CAD/CAM system for in lab manufacturing of the primary part.

COMPLETE ATTACHMENTS

PRECI-VERTIX STANDARD # 1801

6 x 1803 male with attached paralleling mandrel*
6 x 1802 yellow female
1 x 1804 insertion tool

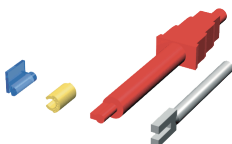


PRECI-VERTIX P

#1811

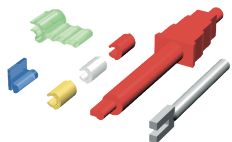
#1811 CC CAD/CAM

6 x 1813 angled male for the best abutment and tissue contours + paralleling mandrel*
6 x 1802 yellow female
1 x 1804 insertion tool
1 x 1815 paralleling mandrel



PRECI-VERTIX COMBI #1812

2 x 1813 angled male for the best abutment and tissue contours + paralleling mandrel*
2 x 1802 yellow female
2 x 1805 white female
2 x 1806 red female
2 x 1808 plastic castable housing
1 x 1804 insertion tool
1 x 1815 paralleling mandrel



*For lab use only.

PRECI-VERTIX FEMALES

# 1802 # 1802B	6 PCS 30 PCS	yellow	normal friction	
# 1805 # 1805B	6 PCS 30 PCS	white	reduced friction	
# 1806 # 1806B	6 PCS 30 PCS	red	increased friction	
# 1807 # 1807B	2 Y + 2 R + 2 W 25 Y + 15 R + 10 W	combination package		

PRECI-VERTIX PLASTIC HOUSING

Castable housing. For lab use only.

# 1808 # 1808B	6 PCS 30 PCS
-------------------	-----------------



AXIAL

ATTACHMENTS

CEKA AXIAL
PRECI-CLIX AXIAL
PRECI-CLIX RADICULAR

EXTRACORONAL

ATTACHMENTS

CEKA EXTRACORONAL
PRECI-VERTIX
PRECI-CLIX EXTRACORONAL
PRECI-SAGIX

PROFILE

ATTACHMENTS

PRECI-BAR
PRECI-HORIX

DIGITAL

SOLUTIONS

DIGITAL LIBRARIES

SPECIALTIES

PRECI-POST
CEKA SITE
CEKA Multi - CEKA Multi O
3-CP
PRECI-SEP
PLASTICWAX
PERMA-RET
MEASURING GAUGE

CEKA
PRECI-LINE

EXTRACORONAL ATTACHMENTS

PRECI-VERTIX®

ENGLISH



CEKA
PRECI-LINE

WWW.CKPL.EU

SIDE EFFECTS, WARNINGS AND PRECAUTIONS

- The attachments are intended for single use. A damage on the threading of the retention part or base rings can pose a risk if the product is to be reused.
- The products are non-sterile.
- There is a risk of poor fit when patient conditions change.
- Bacterial adhesion can be avoided by applying hygiene measures.
- Inappropriate use or bad manufacturing can lead to premature wear of the attachments.
- The functionality of the attachments will be adversely affected by traumas such as grinding and bruxism.
- For the purpose of traceability we advise you to record the lot number of the applied products in the patient file.
- Do not heat products containing titanium.
- Do not use products containing nickel in case of nickel allergy.
- The accessories RE H 79 and H 35 must be used outside the mouth.

CE0197

Prospekt Nr. 262.DE-ed.F
© Copyright ALPHADENT NV 04/2023
BTW BE 0414.789.321 RPR Kortrijk



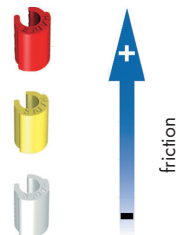
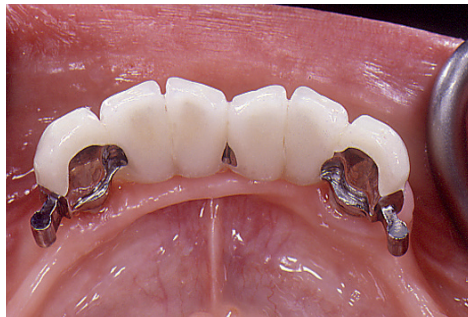
ALPHADENT NV
Mannebeekstraat 33,
8790 Waregem, Belgium
T +32 56 629 531
E info@ckpl.eu



WWW.CKPL.EU

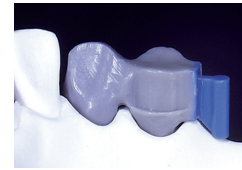
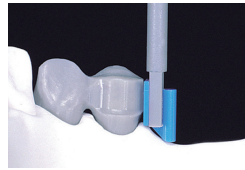
PRECI-VERTIX

- ✓ Easy procedures and servicing
- ✓ Aesthetic: may be used with anterior abutments
- ✓ Minimal servicing
- ✓ Use with any dental alloy
- ✓ Inexpensive
- ✓ Excellent patient comfort
- ✓ Over 40 years of clinical use

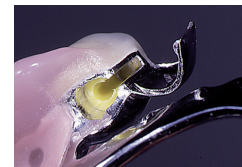
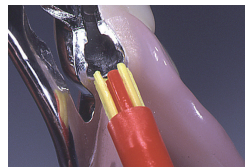


PRECI-VERTIX offers long-lasting retention, unsurpassed lateral stability and minimal replacement.

The elastic clips are easily replaceable and available in 3 friction levels.



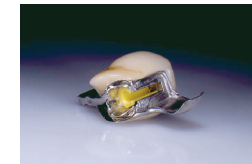
Parallel the male patterns into the abutments.
The male can be reduced to 3 mm vertical height if necessary.
A shoulder for a lingual bracing arm is recommended.
Cast and finish.
Place the yellow female over the male and block out all undercuts for duplication.



Make a refractory model and wax up the frame. Cover the reproduced attachment with wax. Invest and cast. Finish the prosthesis.
Do not polish the inside of the metal sleeve. Leave it sandblasted.
Reduce the occlusal side of the male by 0.2 mm to relieve the attachment from occlusal loads.
Press the clip with the insertion tool into the sleeve.
To remove, use a pointed instrument. Engage and pull out the female.

OPTION FOR USING THE PRECI-VERTIX HOUSING: RECOMMENDED

A burn-out plastic housing ensures a proper fit for the clip and provides excellent aesthetics.



Assemble the housing with the white female (# 1805).
Adapt the housing to proper vertical height and gingival contour.
A lingual arm is added directly to the housing.
Shape the housing for porcelain or acrylic veneering and great aesthetics.
Sprue and remove the white female from the housing with a pointed instrument.
Invest and cast. Apply veneering.
Connect the extension of the housing to the cast framework with acrylic or composite.